



Radio Gateway 1Ch.

Radio Gateway ELG.RGW150

The radio gateway is a unit that allows you to remote audio and serial connections necessary to control the radio equipment via a single Ethernet connection.

As a result of the use of the LAN for the transport of data and signaling is also the realization of a virtual matrix that via a management center allows to control the remote devices from any point of connection to the LAN.

A radio device can be seen and managed from multiple locations.

The unit has a web server for the complete management and configuration.

A control program on PC-Windows allows you to configure the serial port and manage virtual com.

v.1.0

Main features:

A stereo VOIP channel G711.

The VoIP channel has open collector PTT signal and opto isolated Ready.

One/two channel RS232 / RS422 / RS485 from 50 to 115200 baud.

Software options:

The system is designed to add the remote control of external devices via WEB

interface or SNMP. In practice, on request we develop web pages and / or the

relative MIB specific to an apparatus and the driver towards the apparatus in serial. Then through the WEB configuration pages you can link a TLC / WEB / MIB with one of the serial.

Particularity

Voip G711 stereo:

The audio channels are terminated by audio transformers at 600 Ohm.

The reference signal accepted is 0dBm.

Client-server automa connection :

In practice, a serial extension over the network. The client connects to the server in automatic mode. The mode is restored at power on.

Programmable baud rate from 50 to 115200:

are managed all basic speed [50-75-100-150-300-600-1200-2400-4800-9600-19200-28800-38400-57600-115200]

Multiconnection :

more sockets can point to the same physical connection, such as in the case of multiple servers.

Monitor :

you can open sockets for the monitoring of the TX and RX.



Elogic Srl unipersonale

End-frame-rx delay before transferring the data to the serial interface:

adjustable in four steps.

Web server: for browser-based viewing of programming status and to configure the device.

Characteristics

Dimensions:

- Width 90mm
- Depth 95mm
- Height 30mm

Operating Conditions:

- Supply 9-30VDC <5Watt
- Operating temperature: 0-70C°

Voip:

A VOIP channel G711, with PTT / Ready on DB15 male connector.

Serials:

Uart RS232/RS422/RS485 on DB9 male connector DTE.

Protections:

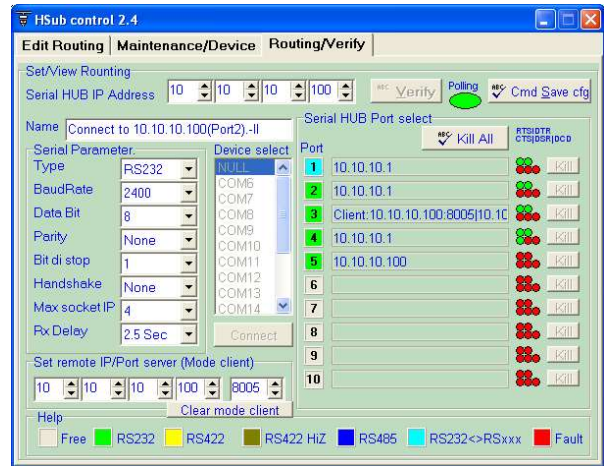
IC with 15KV ESD protection.

Protocols:

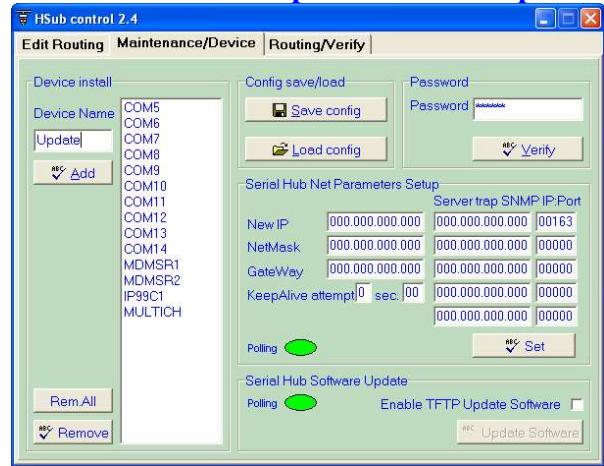
Proprietary protocol on socket to allow the port management in virtual com mode.

8100 Socket connection with commands hide / show / get.

Screenshot of routing setting and verification.



Screenshot of IP setup and software update.





Pinout Connectors

- Power connector VDE standard
- LAN connector (RJ45)

PIN	FUNCTION	ELECTRICAL CHARACTERISTICS
1	DATA TRANSMISSION TX+	ETHERNET 10/100 Mbit DATA
2	DATA TRANSMISSION TX-	ETHERNET 10/100 Mbit DATA
3	RECEIVING DATA RX+	ETHERNET 10/100 Mbit DATA
4	NOT USED	
5	NOT USED	
6	RECEIVING DATA RX-	ETHERNET 10/100 Mbit DATA
7	NOT USED	
8	NOT USED	

- SERIAL Connector RS232/RS422/RS485 (male DB9 DTE)

PIN	FUNCTION	ELECTRICAL CHARACTERISTICS
1	NOT USED	-
2	RX CONTROL DATA	SERIAL RS 232 DATA
3	TX CONTROL DATA	SERIAL RS 232 DATA
4	NOT USED	-
5	GND	REFERENCE
6	TX+	TX a
7	TX-	TX b
8	RX+	RX a
9	RX-	RX b

- VOIP IN/OUT connector and PTT signals (DB15 male connector)

PIN	FUNCTION	ELECTRICAL CHARACTERISTICS
1	PTT OUT	Open collector output 30 Vdc 100 mA
2	Audio USB TX +	+ Audio usb TX 0 dBm
3	Audio USB RX +	+ Audio usb RX 0 dBm
4	NOT USED	
5	Audio LSB TX +	+ Audio lsb TX 0 dBm
6	Audio LSB RX +	+ Audio lsb RX 0 dBm
7	PTT IN	Positive input optoisolated (Vf 1.15V 10mA)
8	GND	
9	COM PTT OUT	Common output PTT optoisolated
10	Audio USB TX -	- Audio usb TX 0 dBm
11	Audio USB RX -	- Audio usb RX 0 dBm
12	GND	
13	Audio LSB TX -	- Audio lsb TX 0 dBm
14	Audio LSB RX -	- Audio lsb RX 0 dBm



Elogic Srl unipersonale

5	COM PTT IN	Common input optoisolated
----------	-------------------	----------------------------------