

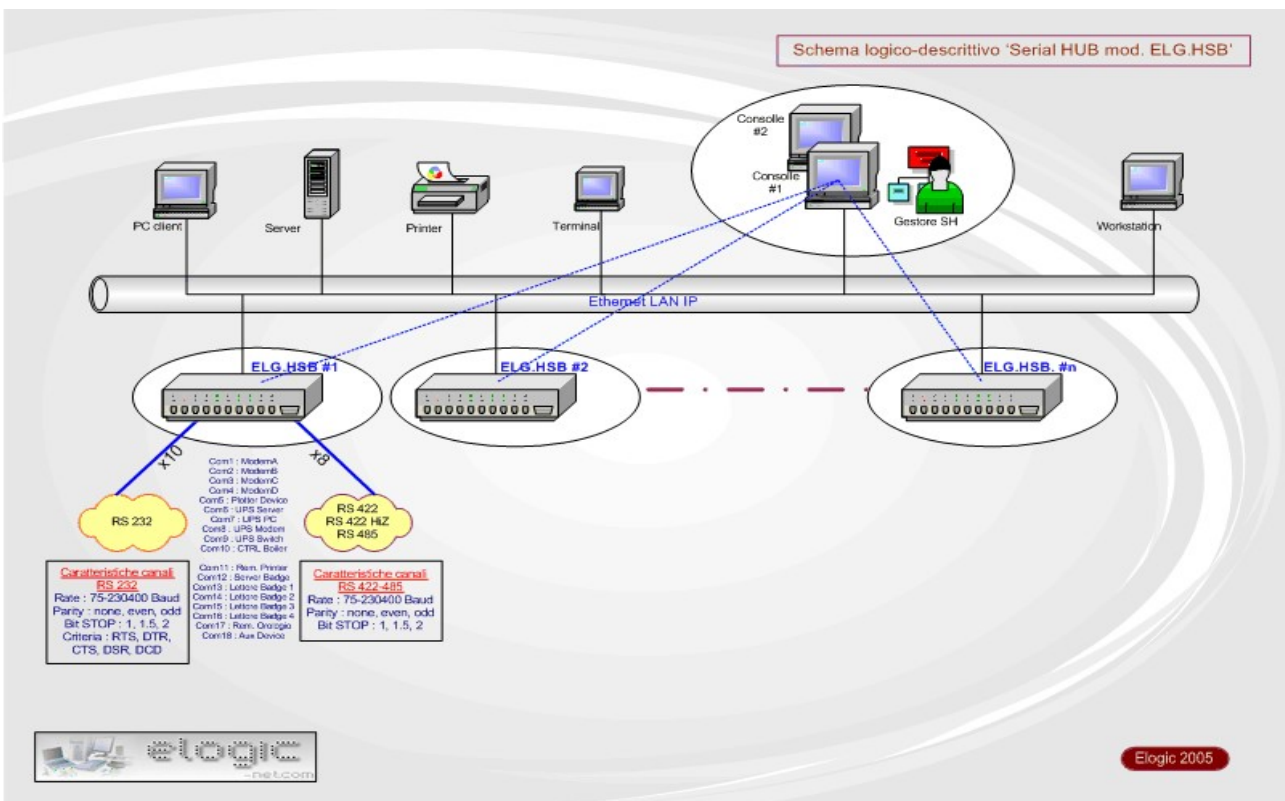


Elogic srl unipersonale

Serial HUB ELG.HSB.RCK.02 ELG.HSB.RCK.01



Serial HUB's scheme of use



The serial HUB RCK02 is a device with two independent LAN channels (HSUB 1 and HSUB 2) that expands up to twenty serial interfaces.

The serial HUB RCK 01 is a single-channel LAN device able to expand up to ten serial interfaces.



Elogic srl unipersonale

Features common to both sections HSUB

-Client-server automa connection : In practice, a serial extension over the network. The client connects to the server in automatic mode. The mode is restored at the power on.

-Baud rate from 50 to 230400

- Physical protocol converter : channels can be used to convert RS232 to RS422 or RS485 or RS422Hiz. This will take advantage of any remaining unused channels in the application serial hub native.

-RTS = TX : the criterion RTS is used to report the status of TX data automatically without intervention of the software.

Multiconnections : multiple sockets can point to the same physical connection, such as in the case of multiple servers.

Monitor : you can open the socket for the monitoring of the TX and RX.

Delay end frame : adjustable in four steps.

Closing connection : immediate without transmission queue. The socket connection can follow the connection with the virtual com on PC.

Autosense : RS232 serial ports are put on standby if not connected.

Integrated software update: by the same management program you can download the software upgrade.

Integrated network parameters setting: through management software, you can change the network parameters. An IP (10.10.10.100) configured by default with the possibility of self-cancellation and a second set by the user.

Http connection : to view the unit state through a browser.

Mechanical characteristics:

Dimensions:

1 standard rack

Depth 207 mm (handles excluded)

Operational Characteristics:

Supply: 90-240VAC

Consumption: 30 Watt massimi

Operating temperature: 0-50C°

Humidity: 30-70% a 25C°



Elogic srl unipersonale

Caratteristiche Elettriche

LAN:

Ethernet LAN interface 10-100Mbps auto detect.

Serial:

Ten UART of which the first eight shared between the connection RS232 or RS422 / 485.

Ten RJ45 connectors for ten serial interfaces RS232. [RXD-TXD-CTS-RTS-DSR-DTR-DCD].

Eight connectors RJ45 for eight serial interfaces RS422/RS485 [Auto enable in RS485 mode].

For channels from the first to the eighth you can use RS232 or RS422/485 connection.

Protections:

IC with 15KV ESD protection.

Lines RS422 / RS485 termination with 120 Ohm resistor can be disabled through soldered jumper.

Notifications:

LED: Power on – Boot – Bite - 10/100MBit - Link on – TX/RX

LED: TX-RX seriali bicolored

Local commands:

Supply switch.

Protocols:

Proprietary protocol on socket to allow the port management in virtual com.

Protocol SNMP V2 for port configuration, type and operating parameters.

Support for NT4, 2000, XP and 2003.

Http for status display.

Configuration parameters of the serial ports:

Parity: None, Even, Odd, Space, Mark

Number of data bits: 8/7/6/5

Number of stop bits: 1, 1.5, 2

Flow control : RTS/CTS , XON/XOFF , NONE

Baud: from 50 baud to 230400 baud

Mode RTS=TX

In total there are four possible types of interfaces: RS232, RS422, RS485 and RS422Hiz.

The RS422Hiz set to high impedance the TX line at the end of the transmission, in this way you can have a network with multiple master and several slaves full duplex.

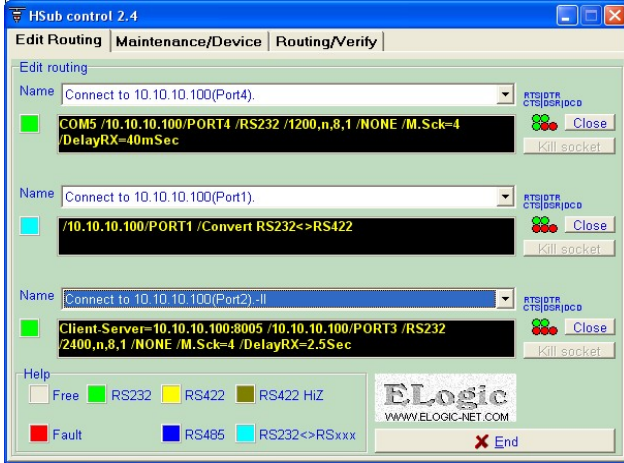
8100 Socket connection for hide / show / get commands.



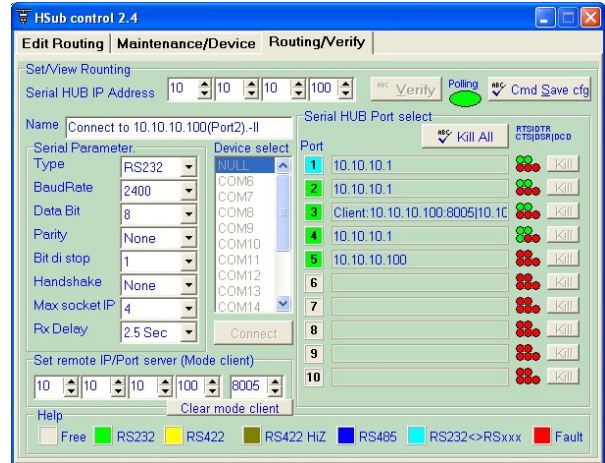
Elogic srl unipersonale

Management software.

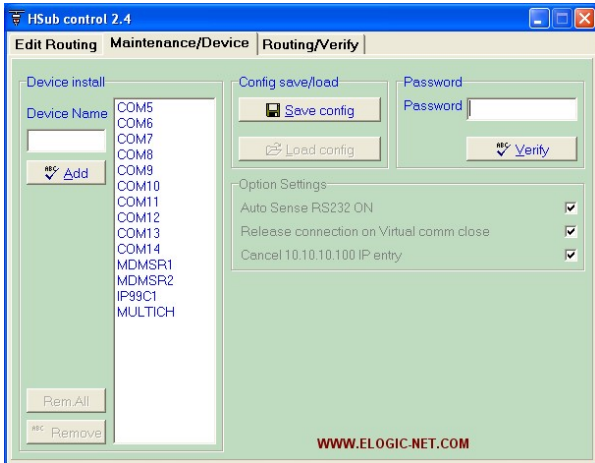
Screenshot of display connections



Screenshot of setting routines and verification.



Screenshot of setting device for virtual com



Screenshot of Setup IP and software update.

